

**PALMER JOHNSON 45.7M
HOKULANI**







Length: 45.70 m (149' 11")

Beam: 8.40 m (27' 6 1/2")

Draft: 1.90 m (6' 3")

Number of Guests: 12

Number of Crew: 7

Built: 2007

Builder: Palmer Johnson

Naval Architect: Nuvolari Lenard

Flag: Cayman Islands

Hull Construction: Aluminium

Equipment: Air conditioning, Stabilisers at anchor, Stabilisers underway, WiFi connection on board

HOKULANI

KEY FEATURES

- 1** High quality aluminium built pedigree yacht
- 2** Iconic Nuvolari Lenard design combines high interior volume with multiple deck seating/dining and sunbathing areas
- 3** Duplex owner's cabin with private media room on main deck forward
- 4** Light flooded rooms thanks to large windows
- 5** Maintained to very high standards
- 6** Carefully selected crew
- 7** Extremely stable with combination of fin stabilisers and gyro stabilisers at anchor
- 8** Good selection of water toys



HOKULANI SPECIFICATIONS

ACCOMMODATION

No of guests: 12

No of cabins: 5

Cabin configuration:

3 Double Cabins, 2 Twin Cabins,
2 Pullmans

Bed configuration:

3 Doubles, 4 Twins,
2 Pullmans

EQUIPMENT

Engines:

2 x MTU12V 400 M90

3,650hp each

2 x John Deere 70KW

Kilopak Generators

Economical cruising at 15 Knots

Max speed 26 Knots

WATERSPORTS

Tender & Toys

1 x Castoldi Jet Tender 240

1 x Kawasaki STX-15F Jet Ski

2 x Seabob F5S

1 x Seabob F5

1 x Wakeboard

2 x Waterskis

1 x Inflatable Canoe

3 x Water Tubs



Forward sunbathing area



Fold down balcony on both sides





Balcony

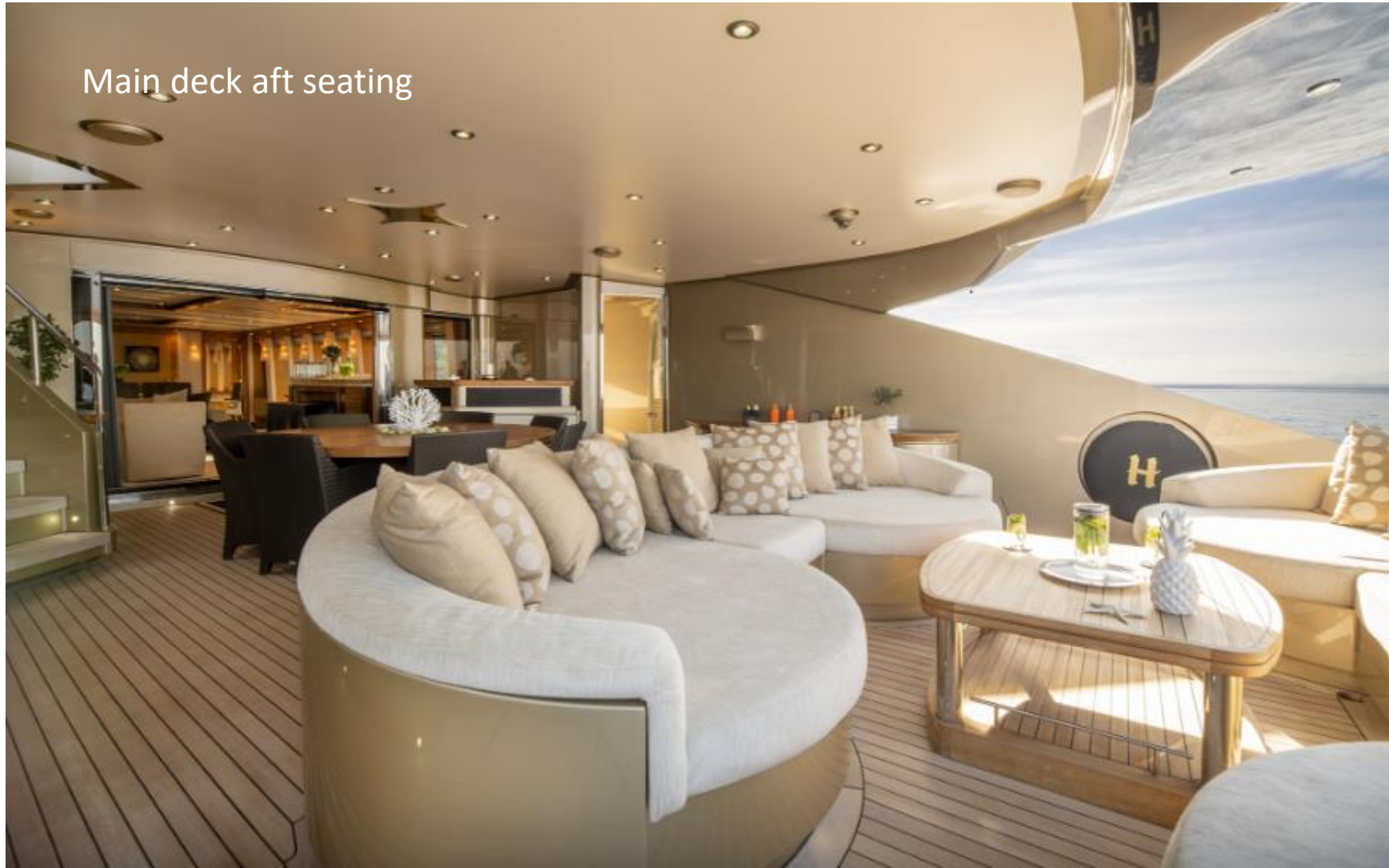


Main deck aft sun lounging area





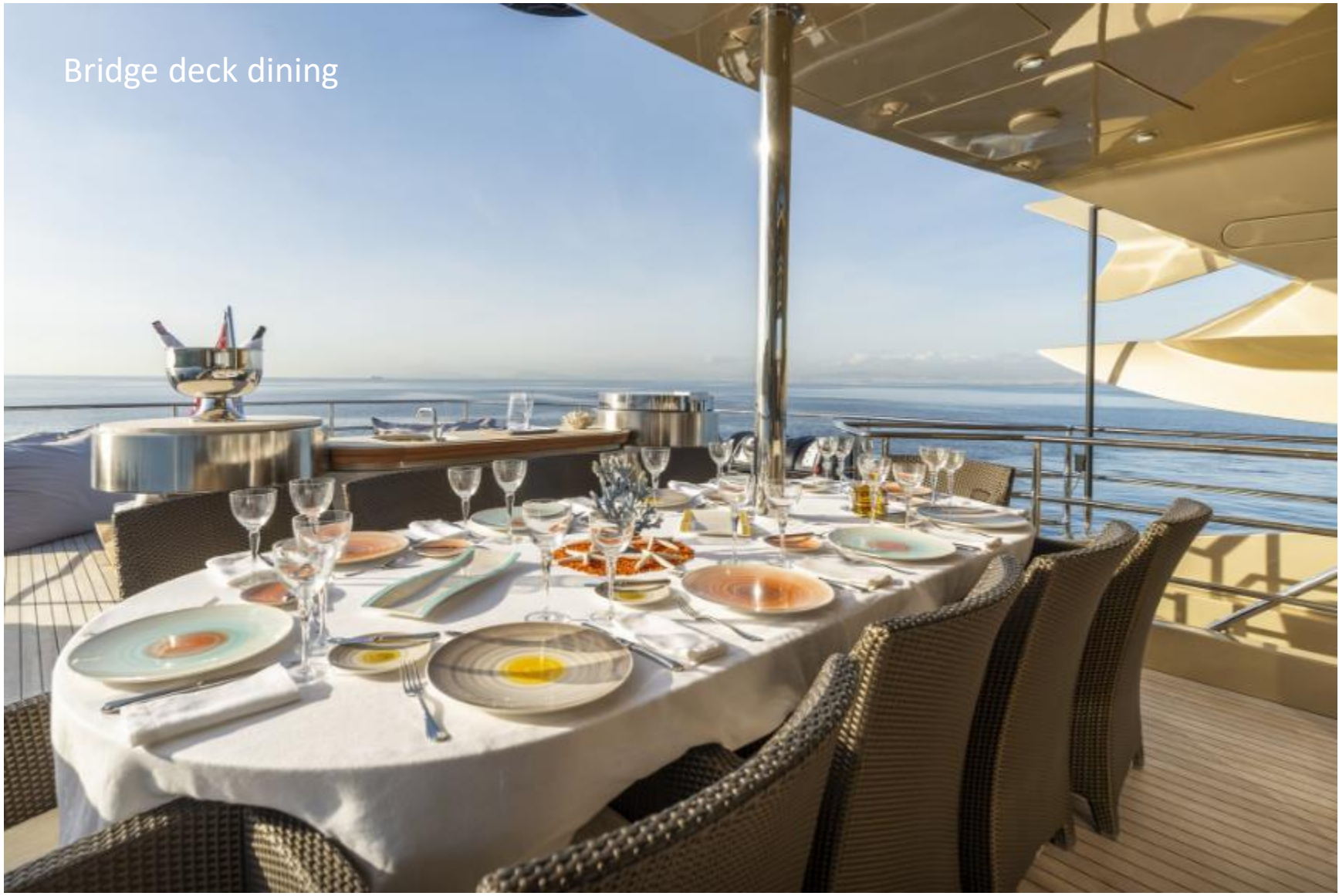
Main deck aft seating



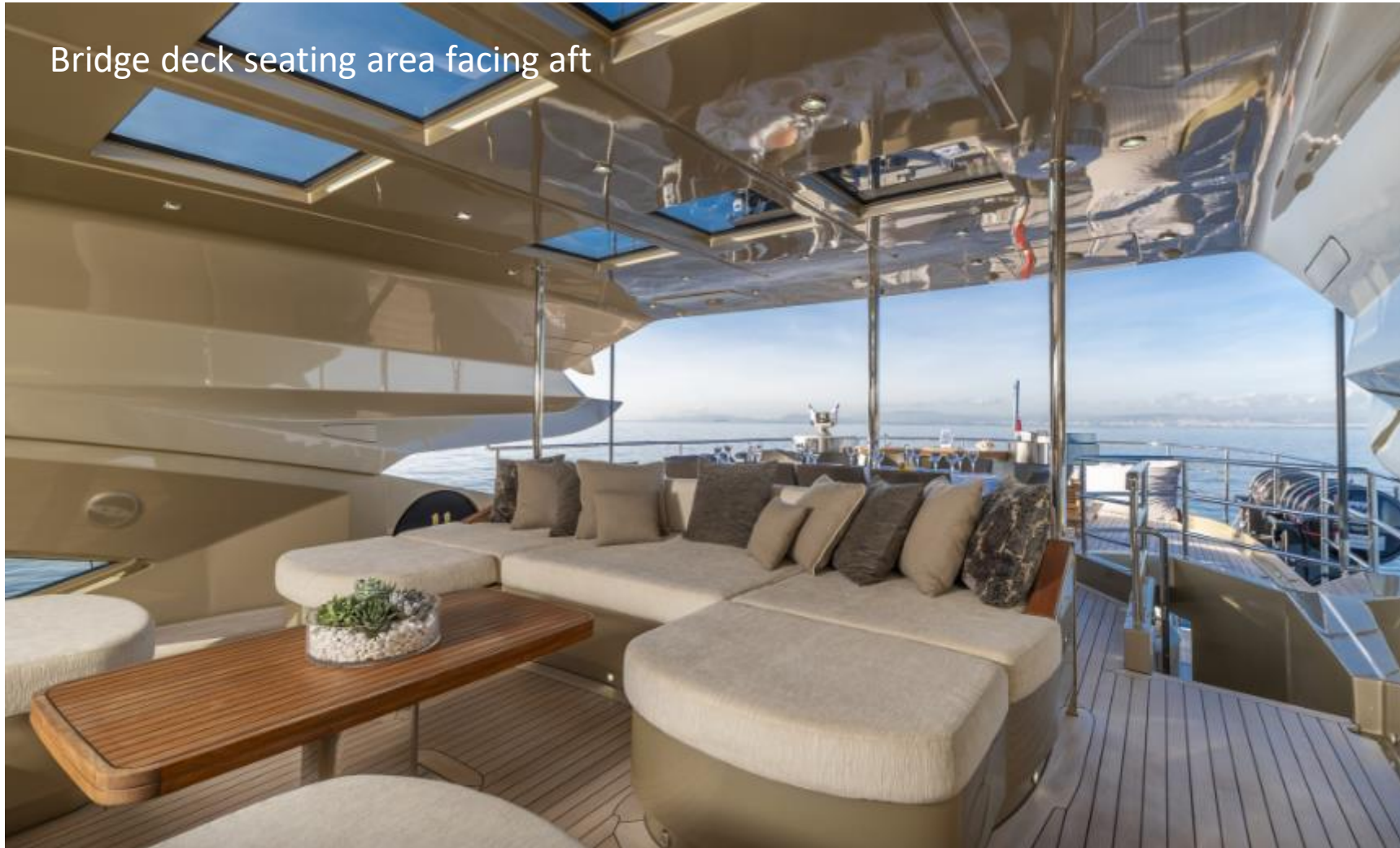




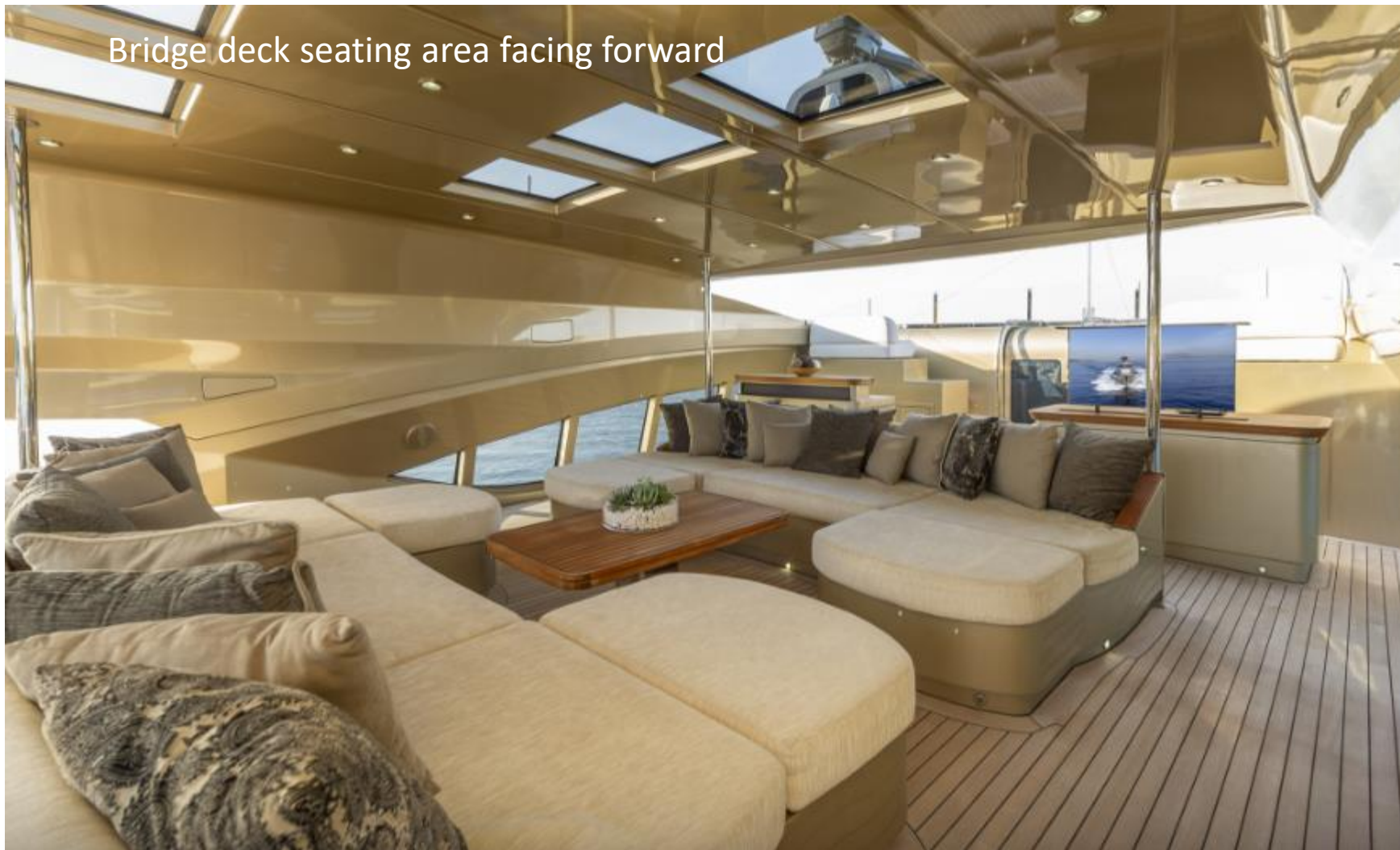
Bridge deck dining



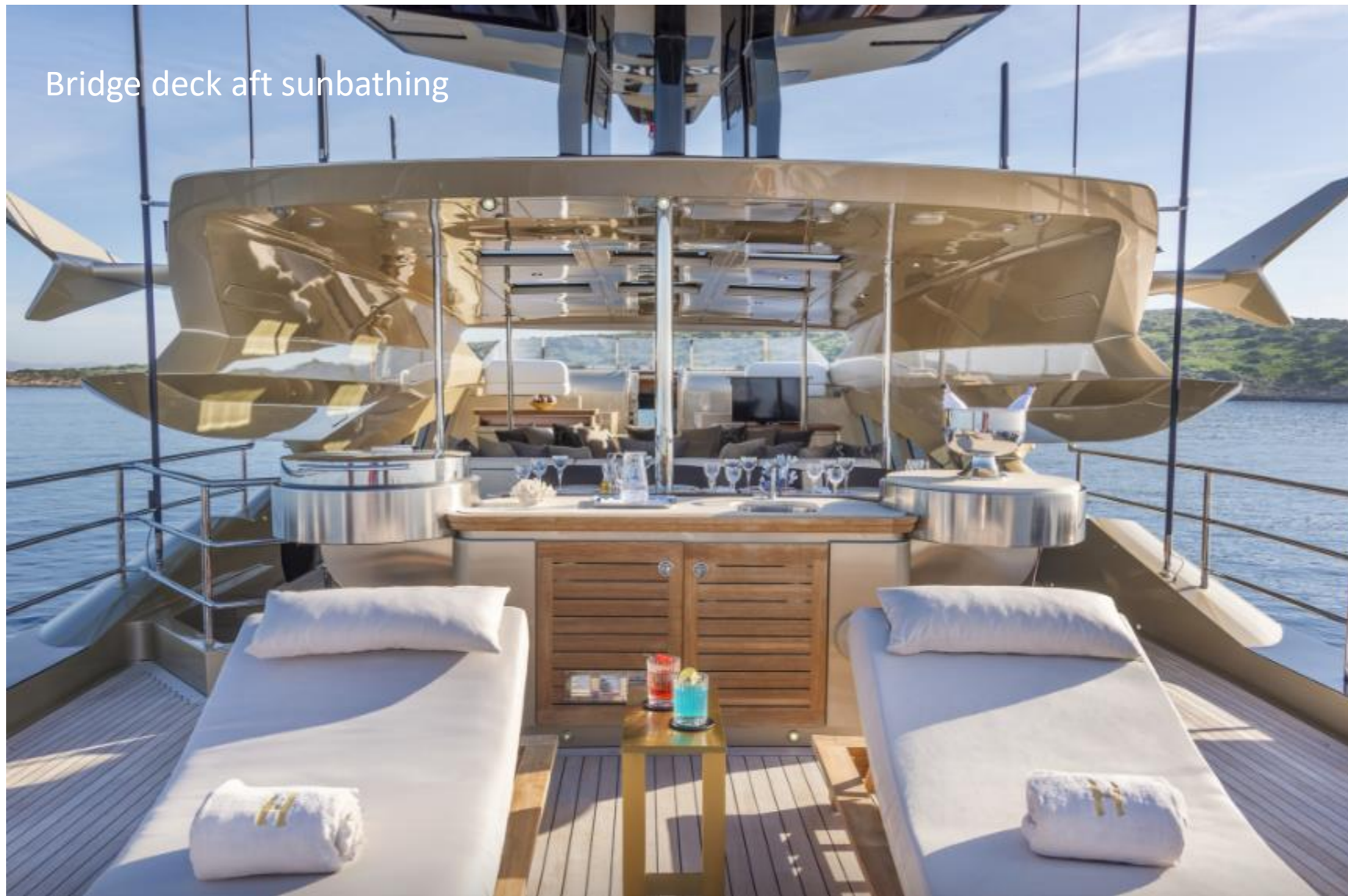
Bridge deck seating area facing aft



Bridge deck seating area facing forward



Bridge deck aft sunbathing



Bridge deck aft sunbathing



Swim platform / toys



Tender / toys
Storage to keep decks clear



Main salon



Floor to ceiling windows in main salon



Main salon bar





Main salon seating



Main salon dining

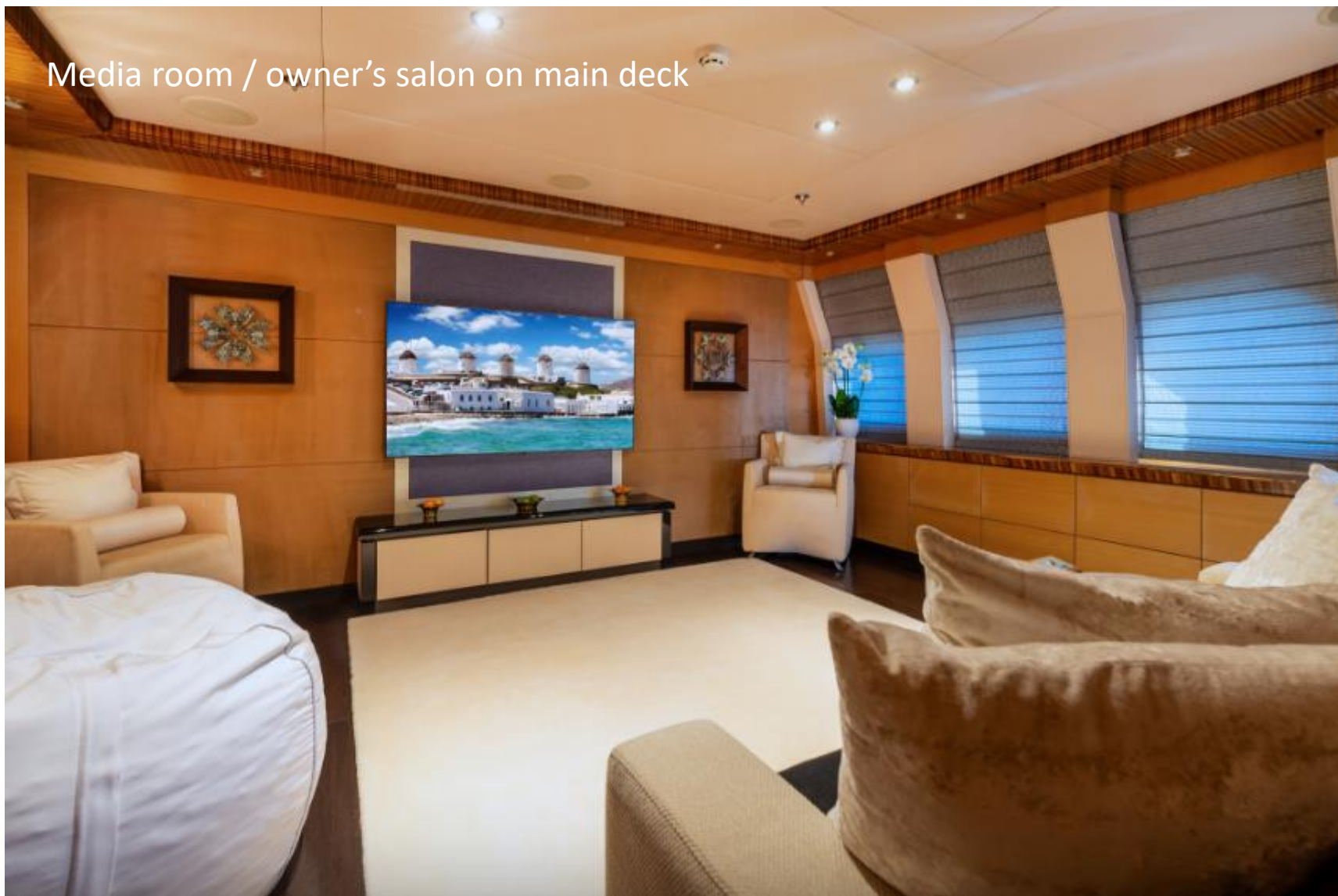




Main salon evening



Media room / owner's salon on main deck



Master cabin



Master cabin office



Master cabin



Master cabin



Master cabin bathroom



Double cabin





Double cabin bathroom





Double cabin





Double cabin bathroom





Twin cabin



Twin cabin



Twin cabin bathroom



Twin cabin



Twin cabin



Twin cabin bathroom





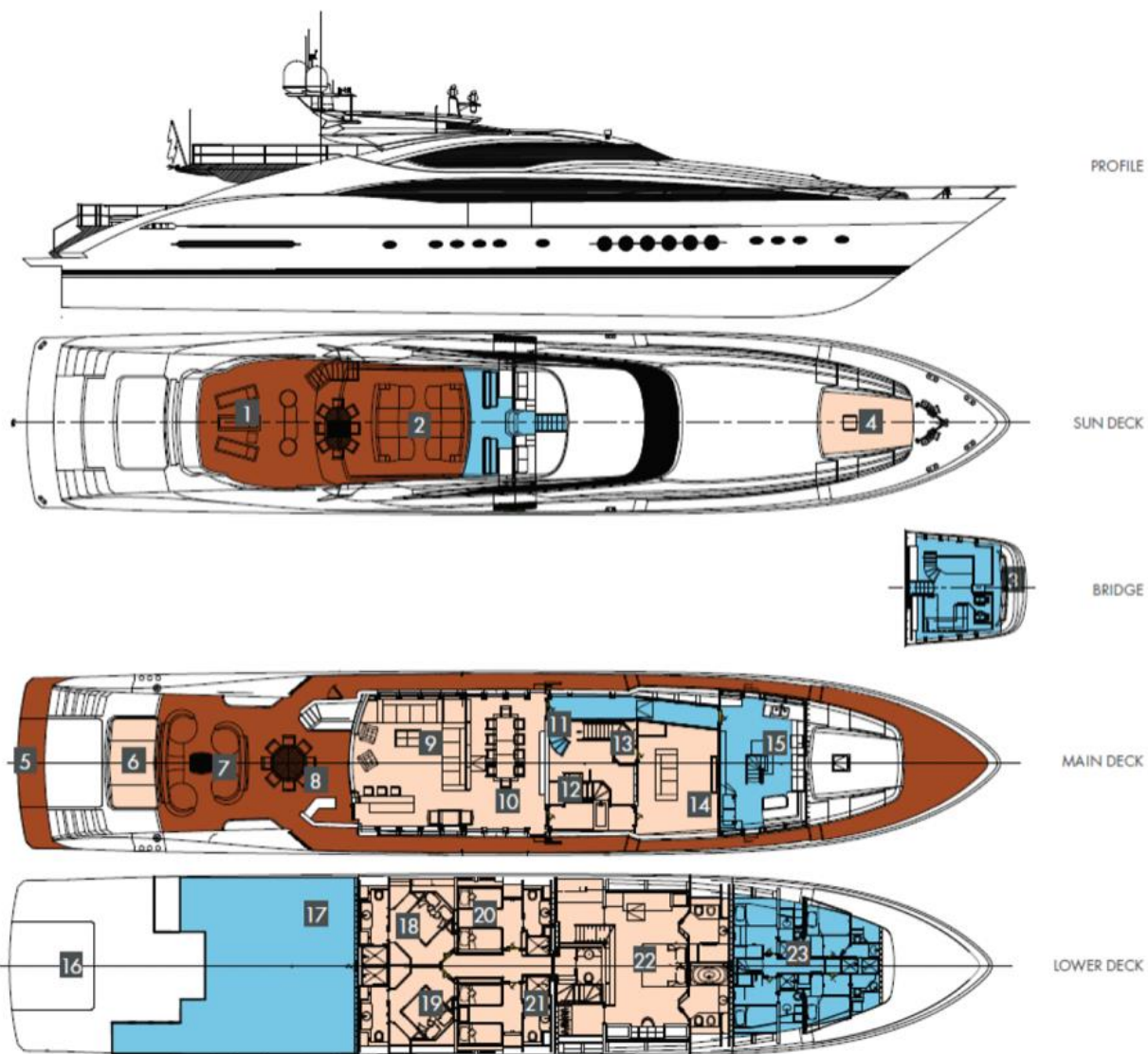
Bridge



Large galley



- 1 SUN DECK AFT
- 2 SUN DECK LOUNGE
- 3 BRIDGE
- 4 FORE DECK LOUNGE
- 5 SWIM PLATFORM
- 6 SUNBATHING AREA
- 7 MAIN DECK AFT
- 8 MAIN DECK AFT - DINNING AREA
- 9 MAIN DECK SALON
- 10 MAIN DECK DINNING
- 11 STAIRS TO BRIDGE
- 12 STAIRS TO GUEST CABINS
- 13 STAIRS TO MASTER CABIN
- 14 CINEMA ROOM
- 15 CREW AREA (CREW MESS+ GALLEY)
- 16 LAZARETTE
- 17 ENGINE ROOM
- 18 DOUBLE CABIN
- 19 DOUBLE CABIN
- 20 TWIN CABIN
- 21 TWIN CABIN
- 22 FULL-BEAM MASTER CABIN
- 23 CREW ACCOMODATION



**PALMER JOHNSON 45.7M
HOKULANI**

