



M/Y FATSA

SANLORENZO

SD96/91





*an
unforgettable
experience*







FOREDECK



leisure moments







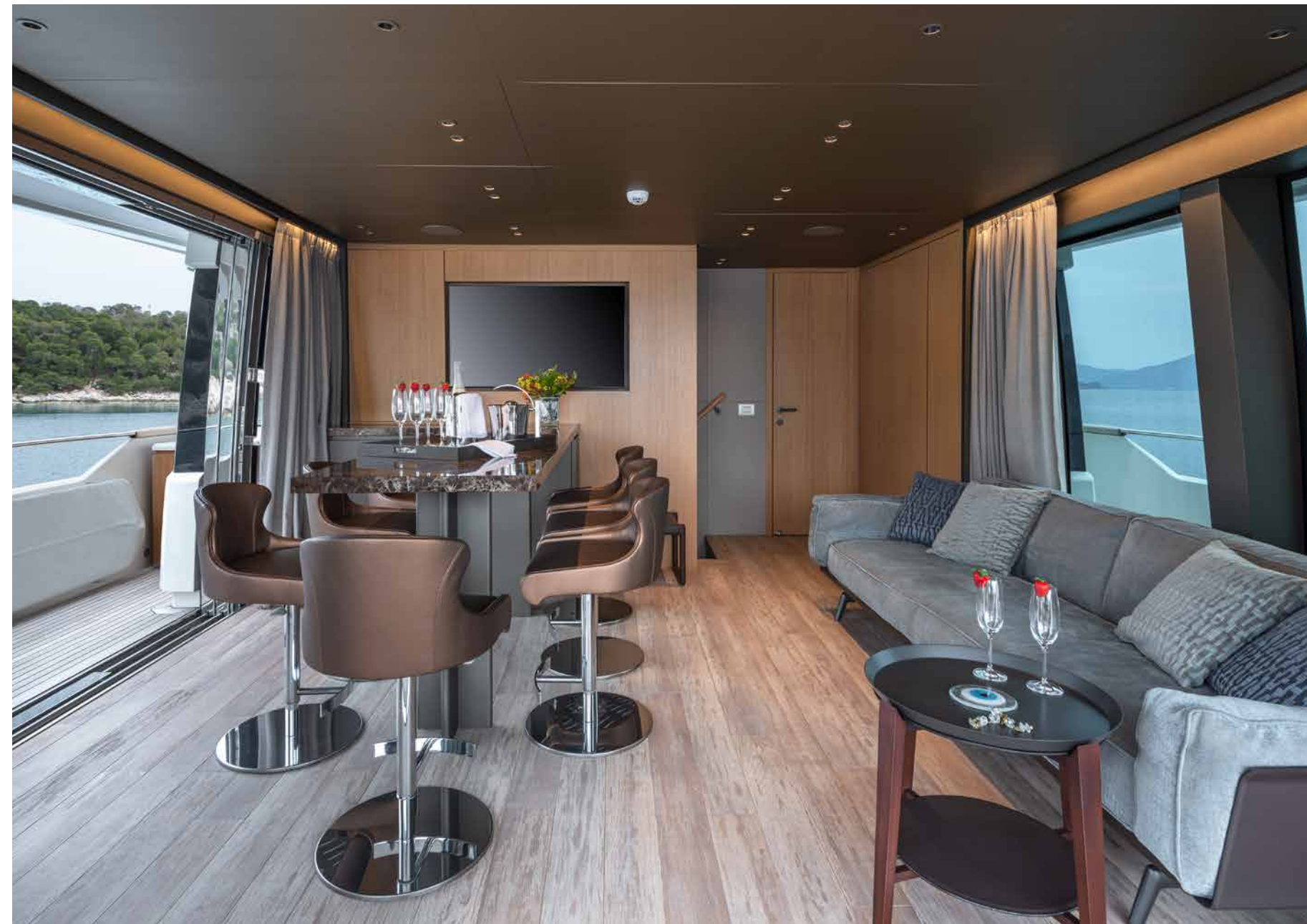
*dine
al fresco*





upper deck





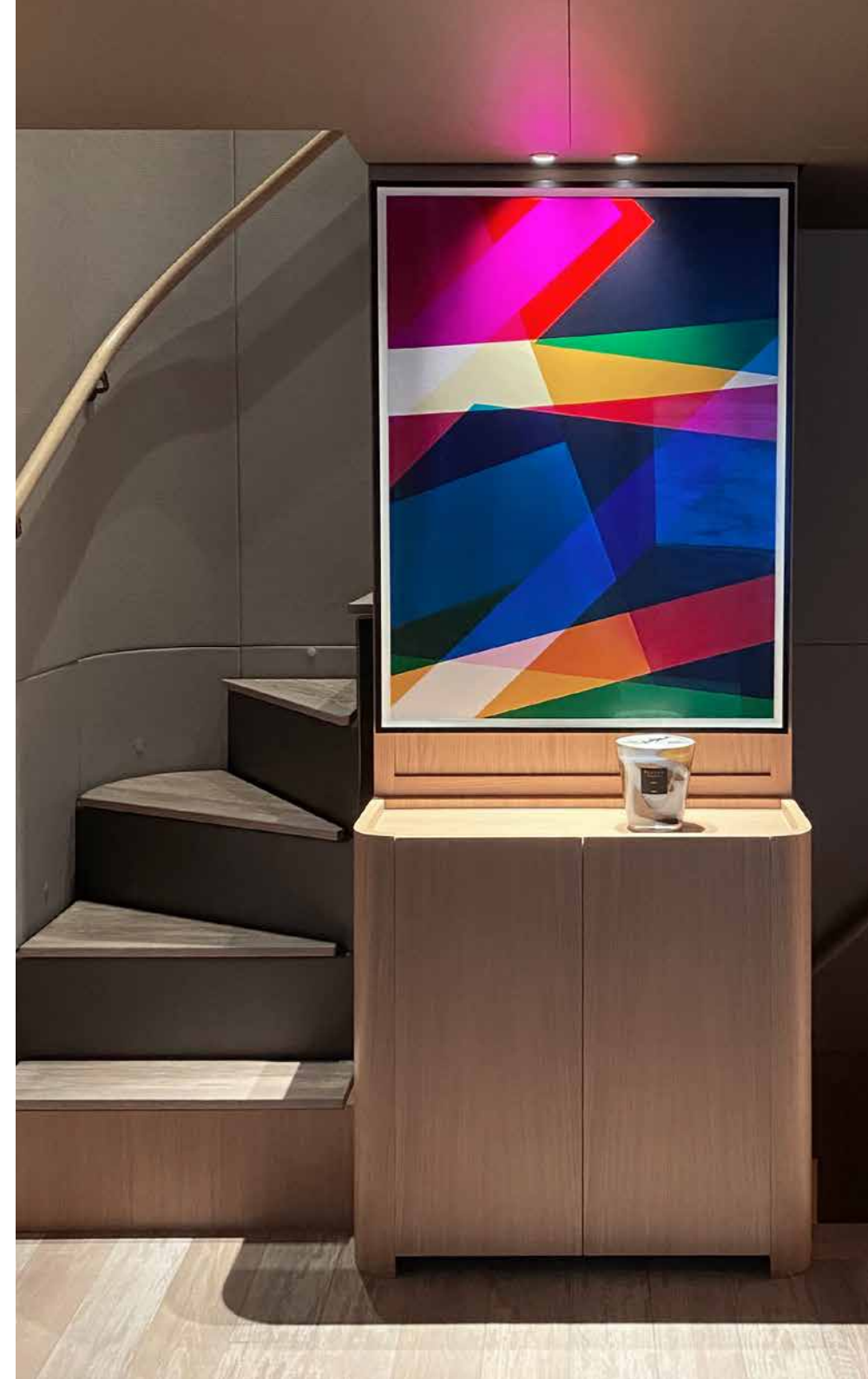
upper deck salon



main deck salon & dining

*timeless
design*





MASTER SUITE

*when
comfort
meets luxury*









VIP suite I





twin stateroom I



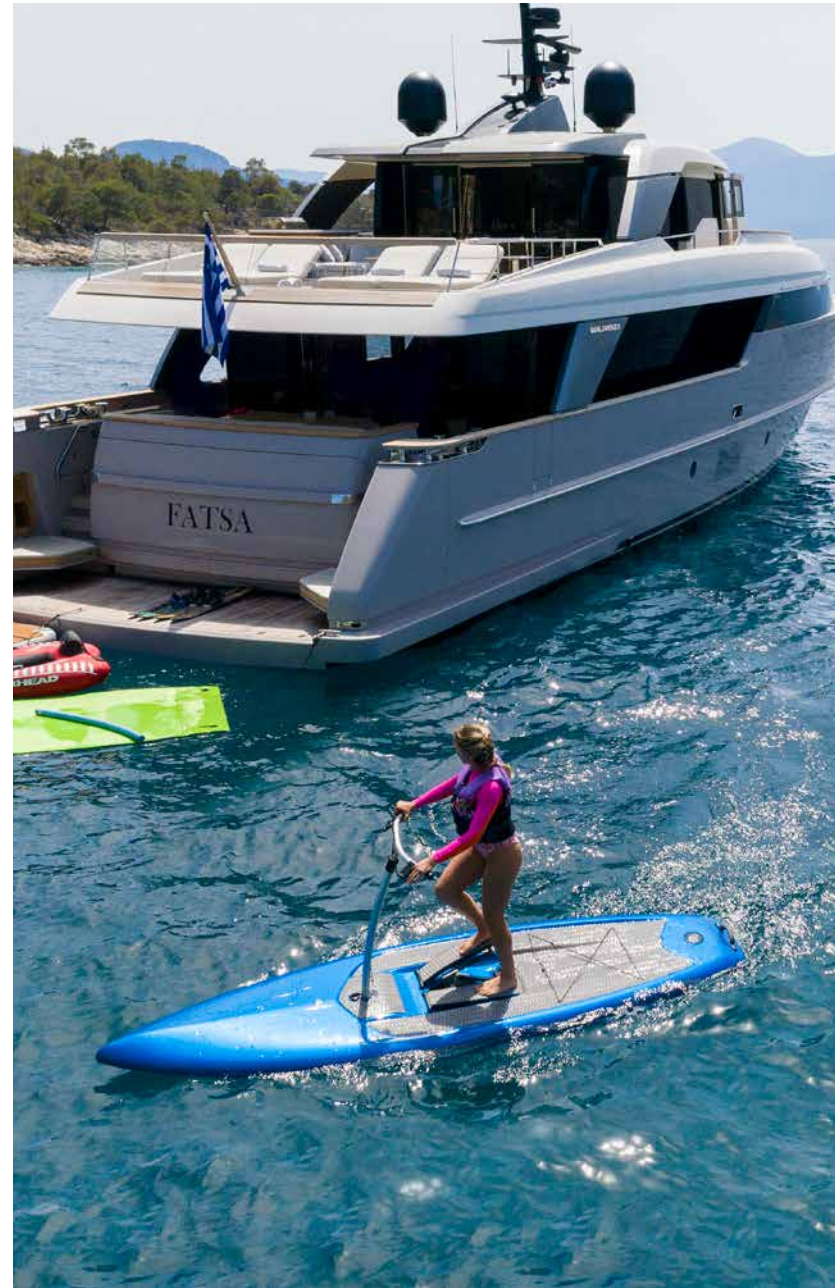
” Fatsa is a stylish 28.93 m San lorenzo, built in 2021 and accommodates up to 10 guests in 5 cabins. Fatsa, thanks to the carefully studied proportions and the great balance achieved between design and volume, it is not only exceptionally elegant, but also exactly as light and manageable as a two-deck yacht. In a balance between an industrial and artisan approach, different styles and furnishings make SD96’s interiors warm and welcoming yet with a modern sophisticated, elegant overall look.



WATERTOYS







life at sea —————

SPECIFICATIONS

LOA	28.93m
BEAM	7.60 m
DRAFT	1.95 m
BUILDER	Sanlorenzo
MODEL	SD96/91
YEAR BUILT	2020/2021
CABINS	5
TOTAL GUESTS	10
TOTAL CREW	6
CRUISING SPEED	14 knots
MAXIMUM SPEED	17 knots
ENGINES	2 x MTU 10V2000M86 (1361hp at 2450 rpm each)
FUEL CONSUMPTION	400 lit/ph
GENERATORS	2 x KOHLER 45KW
GENERATOR CONSUMPTION	350 lit/pd
GROSS TONNAGE	178
STABILIZERS	Zero speed

ACCOMODATION

1 x Master Suite

2 x VIP Suites

2 x Twin Staterooms

1 x Pullman berth

All cabins with en-suite facilities

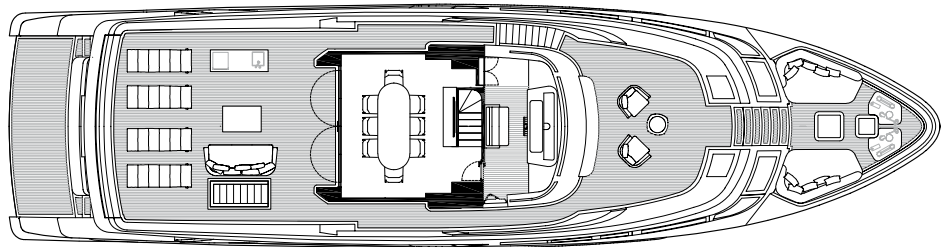
TENDER & TOYS

- 1 x tender zodiac size 4.40m with 60hp Yamaha
- 2 x seabob f5s
- 1 x pedalboard
- 1 x floating mat
- 3 x canoe/kayak (2 seaters)
- 1 x set water skis (adult)
- 1 x water skis (kid)
- 1 x stand-up paddle board
- 1 x monoski
- Fishing equipment
- Beach games
- Snorkel gear
- Inflatable floating water dock-platform
- Inflatable towable water tubes

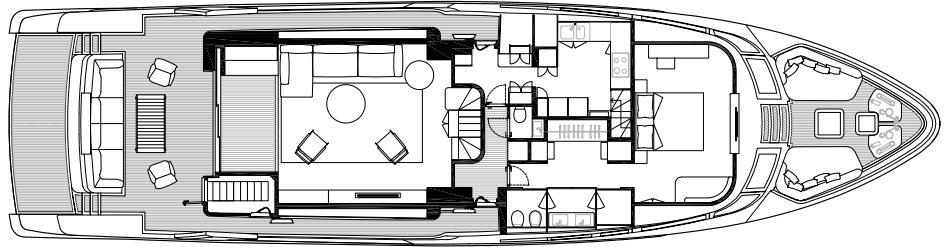
PROFILE



UPPER DECK



MAIN DECK



LOWER DECK

