

Introducing MY ANASA 35m Motor Yacht

*Accommodating up to 12 guests
across 5 lavish cabins ensures
ample space and comfort for
everyone on board.*

Welcome aboard MY ANASA, a luxurious 35m motor yacht designed to offer an exceptional cruising experience. The recent interior refit in 2023 has enhanced his elegance and modernity even further. With impressive features and amenities, MY ANASA is indeed a perfect choice for those with refined tastes.



EXTERIOR





The outdoor spaces on MY ANASA have been meticulously designed to provide the ultimate setting for relaxation and entertainment.



The Upper Deck boasts an amazing lounge and dining area, complete with a stylish dining table and sunbeds, creating the ideal ambiance for enchanting cocktail nights under the stars.



**On the Main Deck,
guests can enjoy a
comfortable seating
and dining area,
perfect for al fresco
dining or simply
taking in
breathtaking views.**





INTERIOR

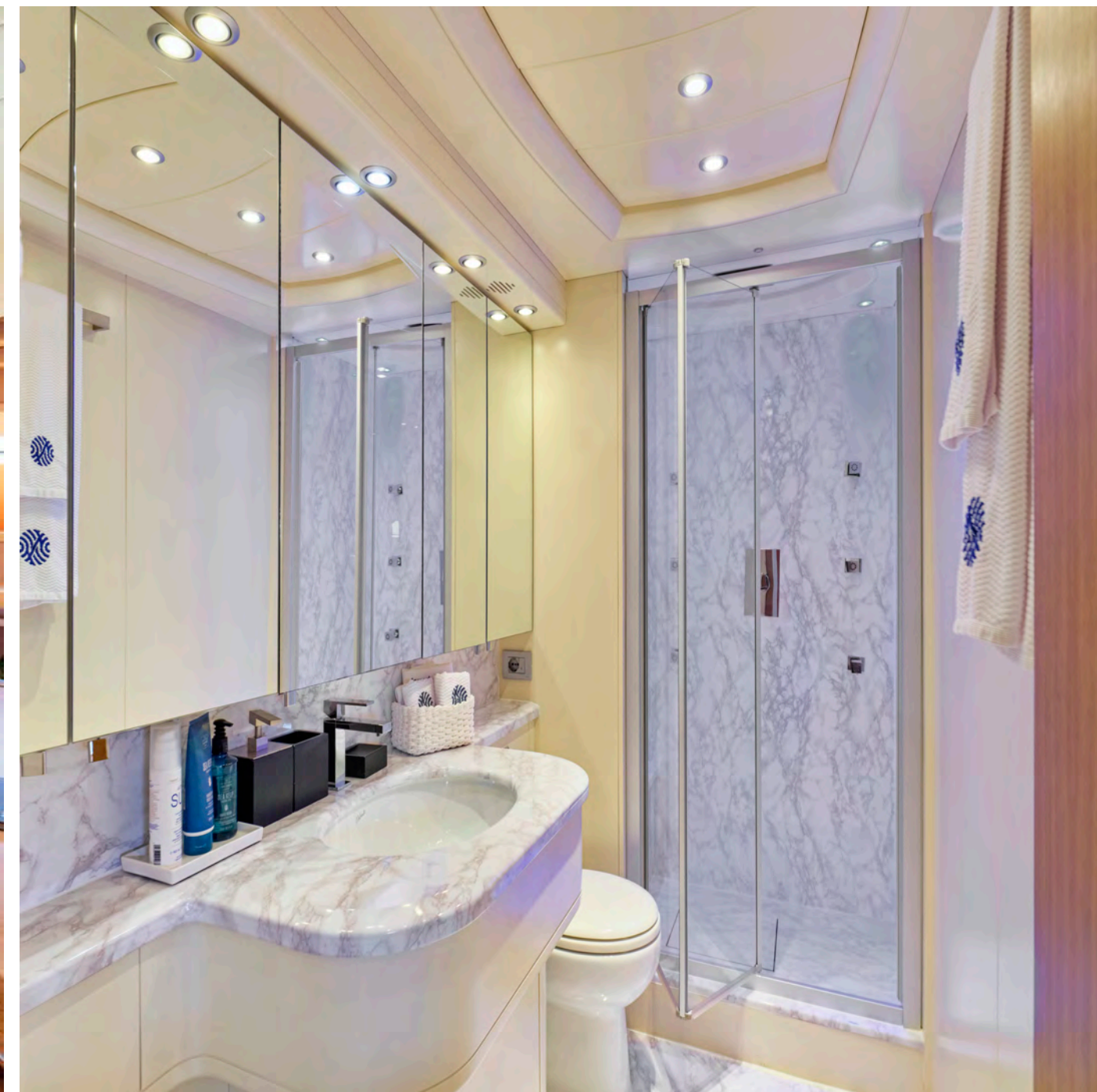
Step into a world of refined luxury within MY ANASA's beautifully crafted interior. The contemporary elegance infused into the yacht's interior through the recent refit is sure to enhance the overall experience.



The dining room, capable of accommodating up to 10 guests, is the perfect setting for enjoying gourmet meals prepared by a private chef or hosting intimate gatherings.

ACCOMMODATION





MY ANASA offers luxurious accommodation for all guests, with thoughtfully designed cabins to ensure maximum comfort.



The yacht features 1 exquisite Master Cabin, 2 VIP Cabins, and 2 Triple Cabins, each equipped with a Pullman bed. Every cabin boasts elegant furnishings, ample storage space, and en-suite bathrooms, allowing guests to retreat to their own private havens after a day of exploration.

WATERTOYS

1 x Tender Novurania 5.50m with 115 hp O/B
1 x Brand New SEADOO GTX LTD, 300HP 3prs
2 x Jobe Aero SUPs
1 x Searaft Platform 4X2m with boarding/swimming ladder
2 x Chase Wing Boards
1 x SeaBob
1 x Electric Wing Foil
Snorkelling equipment

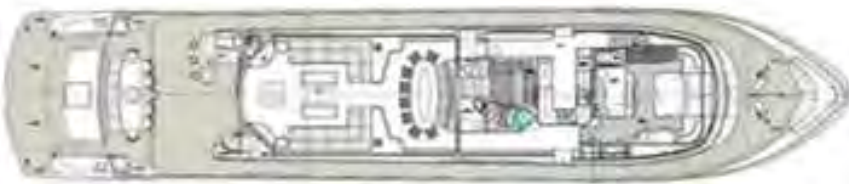




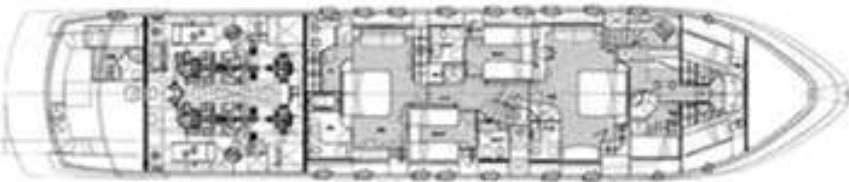
Upper Deck



Main Deck



Lower Deck



SPECIFICATIONS

TYPE: MOTOR YACHT

LENGHT: 15' (35m)

BEAM: 23,62 (7,2m)

DRAFT: 11' (3,38m)

YEAR BUILT: 2009

INTERIOR REFIT: 2023

BUILDER: MAIORA

CONSTRUCTION: GRP

ENGINES: 2 X MTU V 12 - 4000 (2.736 HP each)

GENERATORS: 2 x ONAN 40 kw, 1 x ONAN 22 kw

SPEED (CRUISING/TOP): 24 - 28 knots

CABINS: 5 (1 Master Cabin, 2 VIP Cabins & 2 Triple Cabins with all with en suite facilities, LCD TV, DVD, CD & Radio

GUESTS: 10 - 12

CREW: 6 - 7

EQUIPMENT

Fully Air Conditioned

GMDSS (VHS Radio, SSB Receiver), Autopilot, Radar, Echo Sounder, Gyro Compass, Plotter, GPS, Navtex Weather

Fax, Night Thermal Camera

Closed Circuit Security TV.

Internet and E-mail access, Fax, Mobile Phone, Internal Telephones.

Two Water Makers four Ice Makers

Wine Cooler /Refrigerator.

All TV screens are supported by individual Satellite Receivers.

LEISURE

LCD Cinema Series TV 46", DVD, CD, Radio in the Salon Bose Home Theatre System DVD & CD library.

Bar on Aft Deck Bar & BBQ on Upper Deck RGB lighting.

